

MEADOW RANCH V PLAT 2

A SUBDIVISION LOCATED IN THE NORTHEAST QUARTER OF SECTION 18,
TOWNSHIP 5 SOUTH, RANGE 1 WEST, SALT LAKE BASE AND MERIDIAN

FOUND UTAH COUNTY
BRASS CAP MONUMENT
NORTH 1/4 CORNER
SEC 18, T5S, R1W SLB&M

S8: 022: 0022
UNITED STATES OF
AMERICA

FOUND UTAH COUNTY
BRASS CAP MONUMENT
NORTHEAST CORNER
SEC 18, T5S, R1W SLB&M

7
18

7
18

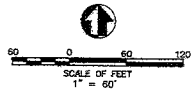
POINT OF BEGINNING

S 89°04'47" E 1464.84'
SECTION LINE

OPEN SPACE DEDICATED TO
EAGLE MOUNTAIN CITY.

OPEN SPACE
18.07 acres
787,343 sq.ft.

CURVE	RADIUS	LENGTH	DELTA
C2	300.00'	175.10'	33.26°23'
C6	173.00'	155.18'	129°42'19"
C7	50.00'	247.87'	284°02'23"
C17	500.00'	83.86'	10°48'12"
C18	12.50'	72.41'	100°10'24"
C19	275.00'	128.33'	26°44'27"
C20	150.00'	96.89'	37°43'46"
C21	150.00'	98.33'	137°58'31"
C22	16.00'	13.62'	52°01'12"
C23	50.00'	60.57'	69°24'21"
C24	50.00'	60.00'	69°45'18"
C25	50.00'	42.82'	54°49'24"
C26	50.00'	78.46'	81°03'22"
C27	18.00'	13.62'	52°01'12"
C28	100.00'	120.13'	29°42'18"
C29	325.00'	55.36'	09°43'32"



S8: 033: 0032
UTAH STATE DEPT.
OF NATURAL
RESOURCES

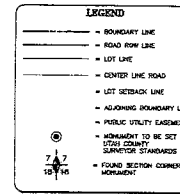
MEADOW RANCH
FUTURE PHASE

S 00°00'00" W 200.00' BRASS
EAST 1/4 CORNER

FOUND UTAH COUNTY
BRASS CAP MONUMENT
EAST 1/4 CORNER
SEC 18, T5S, R1W SLB&M

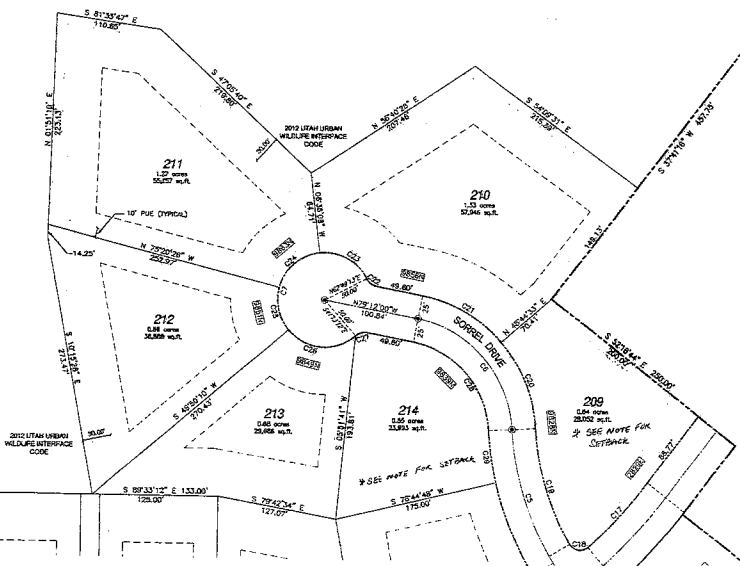
18
17

18
17



Dr. 14120/2014 Rev 1 1414
JEFFREY SMITH
UTAH COUNTY RECORDS
301 W. 2150 N. 7TH BLVD. # 18
SALT LAKE CITY, UTAH 84143

MEADOW RANCH
FUTURE PHASE



PSOMAS
479 S. Rowland Road, Suite 201
Salt Lake City, Utah 84143
(801) 226-2177 (801) 278-5282 (fax)

14168 sheet 2 of 2

